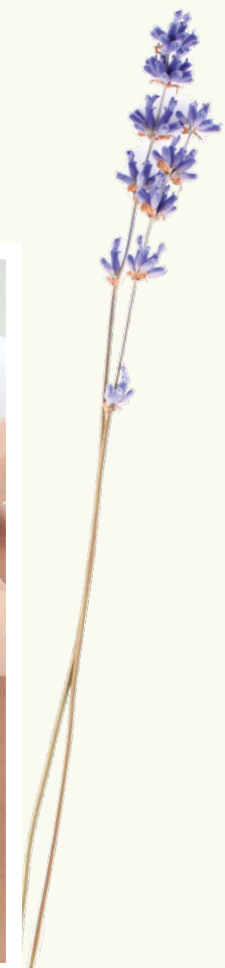


Spa Brochure




Fermain Valley
TREE HOUSE SPA



Spa Experiences

Treatment and Afternoon Tea Treat*

Choose a 55 minute treatment from a selection of the six options below, plus enjoy afternoon tea in the Valley Tea Rooms.

Face & Body Combo

Dermalux Light Therapy Facial

Environ Essential Facial

Comfort Zone Luxury Facial

Tree House Manicure with heated mitts

Tree House Pedicure

£99 per person

*Please note that use of the pool and heat facilities are not included with this package.



Facials

[COMFORT ZONE] Hydramemory (Hydra Glow) Facial

The ultimate treatment for deep hydration and radiance, ideal for skin stressed by central heating and air-conditioning. The HydraBrush Massage transports the precious Moringa Oil and the Hyaluronic Acid biomimetic fragments deep into the skin.

55 minutes - £85

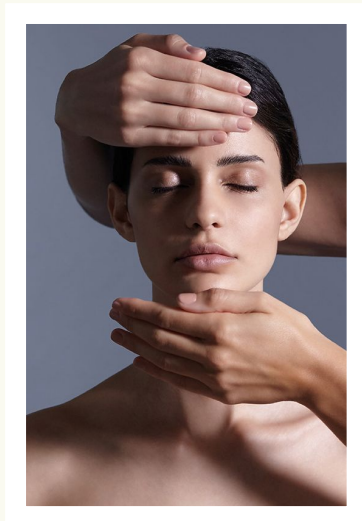
25 minutes - £55

[COMFORT ZONE] Remedy Facial

An innovative, fortifying approach to sensitive, delicate skin. With a Prebiotic from sugar beets, promoting cutaneous resilience, and Marula Oil, this facial calms skin discomfort, relieves neuroinflammation and reinforces the skin's defence.

55 minutes - £85

25 minutes - £55



ENVIRON Essential Facials

Environ's pioneering dual electro-sonic technology sets the benchmark for professional skin care treatments. Low-frequency sonophoresis together with pulsed iontophoresis in combination with Environ's professional skin care products, help deliver more of what skin needs where it needs it most - making a real lasting difference to your skin, for life. Environ do not test on animals and are cruelty-free however please inform us if you would like only vegan friendly products to be used during your facial.

ENVIRON Essential Moisture Boost Facial

Helps reduce the appearance of fine lines caused by dehydration and increases the plumpness of the deeper layers of the skin. Hyaluronic Acid is the hero ingredient, promoting moisturised, glowing-looking skin.

85 minutes - £130 | 55 minutes - £85

ENVIRON Essential Comfort Calm Facial

Ideal for sensitive, irritated skin. A powerful combination of smart ingredients, leaving the skin feeling soothed with a healthy radiance.

85 minutes - £130 | 55 minutes - £85

ENVIRON Essential Radiance Reveal Facial

A targeted solution for sun-damaged or pigmented skin. Boosting the skin with the correct combination of ingredients results in flawless, radiant-looking skin.

85 minutes - £130 | 55 minutes - £85



Dermalux Led Light Therapy Facials

Dermalux LED phototherapy is a non-invasive treatment that uses clinically proven therapeutic light energy to trigger the skin's natural rejuvenation and repair processes without pain or downtime.

Personalised Facial with Dermalux LED Light Therapy

55 minutes - £85

Course of 6 treatments (55 minutes) - £464

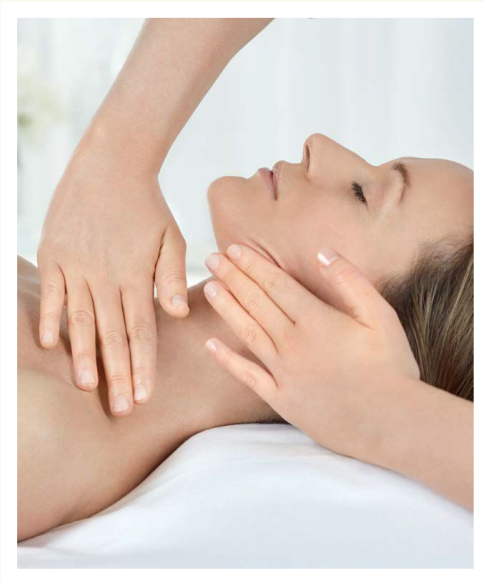
Course of 10 treatments (55 minutes) - £739

Dermalux LED Light Therapy Only

30 minutes - £55

Course of 6 treatments (30 minutes) - £300

Course of 10 treatments (30 minutes) - £478



Pregnancy

Pregnancy Massage

Take some time for yourself before your baby arrives and enjoy a luxurious full body massage, using only organic massage oils suitable for pregnancy.

55 minutes - £85

Suitable for all mothers-to-be from 13 weeks of pregnancy.



Body Treatments

Tree House Spa - Signature Combo Treatment

Unwind with our favourite treatment. The Tree House treatment consists of back brushing, back scrub, back massage and a fully personalised facial.

85 minutes - £130

Heat Treatments

Lava Shell Relax Massage

This massage offers an idyllic treatment combining the warmth of the shells with deeply relaxing massage techniques, creating a sense of balance to the entire body and mind.

55 minutes - £95

Lava Shell Relax Back Massage

The warmth of the Lava Shells allows deep relaxation in this bespoke back massage treatment. The shells glide over the back to warm and relax muscles.

25 minutes - £65



Massage

Full Body, Face and Scalp Massage

A traditional massage designed to ease tension, relieve stress and promote a general state of well being. Includes a face and scalp massage.

70 minutes - £107

Full Body Massage

Your therapist will select an aromatic oil according to your concerns, be they muscle pain, stress relief, relaxation or balance. The flowing massage works deeper into the tension, encouraging optimum circulation.

55 minutes - £85

Back, Neck & Shoulder Massage

A deeply therapeutic massage focusing on the aches and pains of the back and eliminating tension knots in the shoulders.

25 minutes - £55





Combination Treatments

The Tree House Spa - Full Body Massage & Luxury Facial Combo Treatment

This treatment includes a deeply relaxing and stress melting back, neck and shoulder massage followed by a luxury facial individually tailored to your own skin needs leaving your skin hydrated, visibility bright and smooth. Our luxury facial includes: cleanse, tone, facial massage, exfoliation and mask.

115 minutes - £155

Tree House Spa - Signature Combo Treatment

Unwind with our favourite treatment. The Tree House treatment consists of back brushing, back scrub, back massage and a fully personalised facial.

85 minutes - £130

The Tree House Spa - Luxury Facial & Back, Neck, Shoulder Massage Combo Treatment

This treatment includes a deeply relaxing and stress melting back, neck and shoulder massage followed by a luxury facial individually tailored to your own skin needs leaving your skin hydrated, visibly bright and smooth. Our luxury facial includes: cleanse, tone, facial massage, exfoliation and mask.

85 minutes - £130

The Tree House Spa - Full Body Massage & Express Facial Combo Treatment

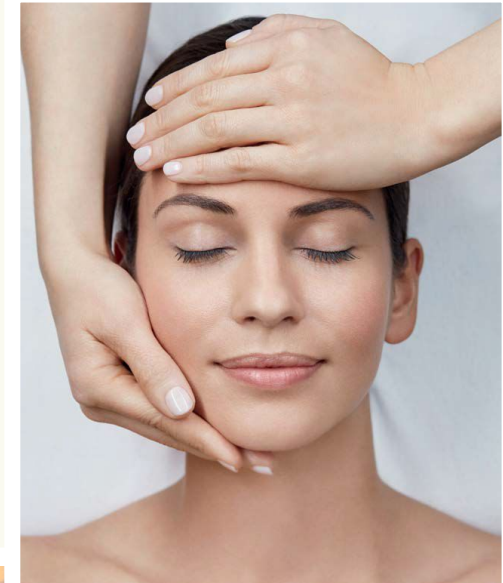
This treatment includes a relaxing full body massage which will be focused on the areas where you are suffering from aches, pains and tensions followed by an invigorating prescriptive facial to include a cleanse, tone, exfoliation and mask leaving your skin glowing and hydrated.

85 minutes - £130

The Tree House Spa - Face & Body Combo Treatment

The perfect pick me up facial which includes a cleanse, tone, exfoliation and mask combined with a classic neck, back and shoulder massage. This massage incorporates traditional techniques to help relieve muscular tension in common stress-prone areas.

55 minutes - £85



Hands & Feet

Tree House Classic Pedicure

A pedicure including hard skin removal, skin softening exfoliation and relaxing foot and leg massage make this pedicure the perfect pick me up for your feet. This treatment includes a shape and polish of the toenails, with a beautiful colour of your choice. Please bring open toe shoes to wear after your pedicure.

55 minutes - £55

Tree House Classic Manicure

A manicure includes shaping of the nail, cuticle maintenance, hand exfoliation and a relaxing hand and arm massage then to finish a polish is applied. This treatment includes a shape and polish of the fingernails, with a beautiful colour of your choice.

40 minutes - £50

Upgrade with Luxury Hand/Foot Mask with Heated Mitts/Booties

Great for very dry, cracked hands or feet in need of some extra TLC

Luxury Pedicure - Hydrating Hand Mask with Heated Mitts

Luxury Pedicure - Hydrating Foot Mask with Heated Booties .

ADD 15 minutes - £20

Varnish Only

For those looking for a professional varnish.

(Nail preparation must be completed pre-appointment).

15 minutes - £20

Please bring open toe shoes to wear after your pedicure.

Gel Nails

Bio sculpture gel is a bespoke treatment to help the natural nail stay healthy and encourages nail growth. Our gel manicures last for up to 3 weeks and maintain the high gloss shine. Bio Sculpture products are completely vegan and cruelty free.

Gel Pedicure

55 minutes - £60

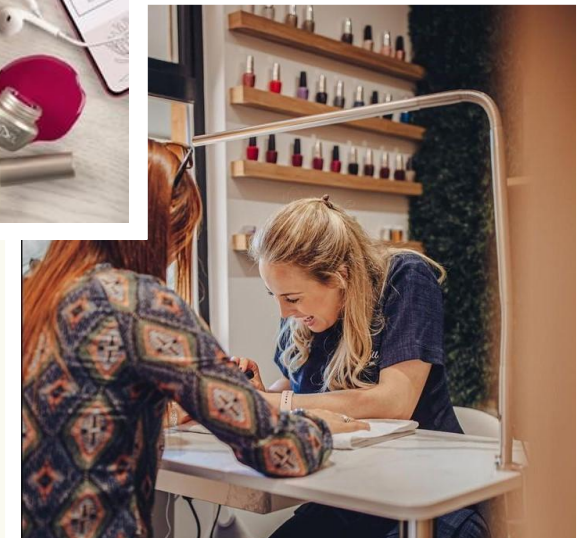
Gel Manicure

55 minutes - £55

Gel Removal

25 minutes - £20

**Removal of soft gels only i.e brush on gels/soak off gels. We are not able to remove hard gels or acrylics requiring specialist equipment. If unsure we recommend that you call the spa direct prior to making a booking.*



Eyes

Eyelash Tint, Eyebrow Tint & Shape	40 minutes - £40
Eyelash and Eyebrow Tint	25 minutes - £30
Eyelash Tint	25 minutes - £25
Eyebrow Tint & Shape	25 minutes - £25
Eyebrow Tint	10 minutes - £15

Please note that patch tests are required for tinting and LVL treatments a minimum of 24 hrs before your appointment. All of our brow and lash treatments are completely vegan and cruelty-free.

Waxing

Full Leg	30 minutes - £35
Brazilian/Hollywood	30 minutes - £35
Chest	30 minutes - £35
Back	30 minutes - £35
Half Leg	25 minutes - £30
Full Arm	25 minutes - £30
Forearm	15 minutes - £25
Upper Lip and Chin	15 minutes - £25
Chin	10 minutes - £15
Under Arm	10 minutes - £15
Bikini	10 minutes - £15
Eyebrows	10 minutes - £15
Upper Lip	10 minutes - £15

Get in touch

To book please either;

Visit our website

handpicked.co.uk/fermainvalley

handpickedhotels.co.uk/fermainvalley/spa

Call

01481235666 OR 01642706606

Email

enquiries@handpicked.co.uk OR spa.fermain@handpicked.co.uk

Terms and conditions

Please visit our website for further information on spa booking terms and conditions. Opening and closing times. How to book and methods of payment. Cancellation policy.

handpickedhotels.co.uk/spa-termsandconditions

Tree House Spa
Fermain Valley Hotel
Fermain Lane
St Peter Port
GY1 1ZZ



Fermain Valley

TREE HOUSE SPA

